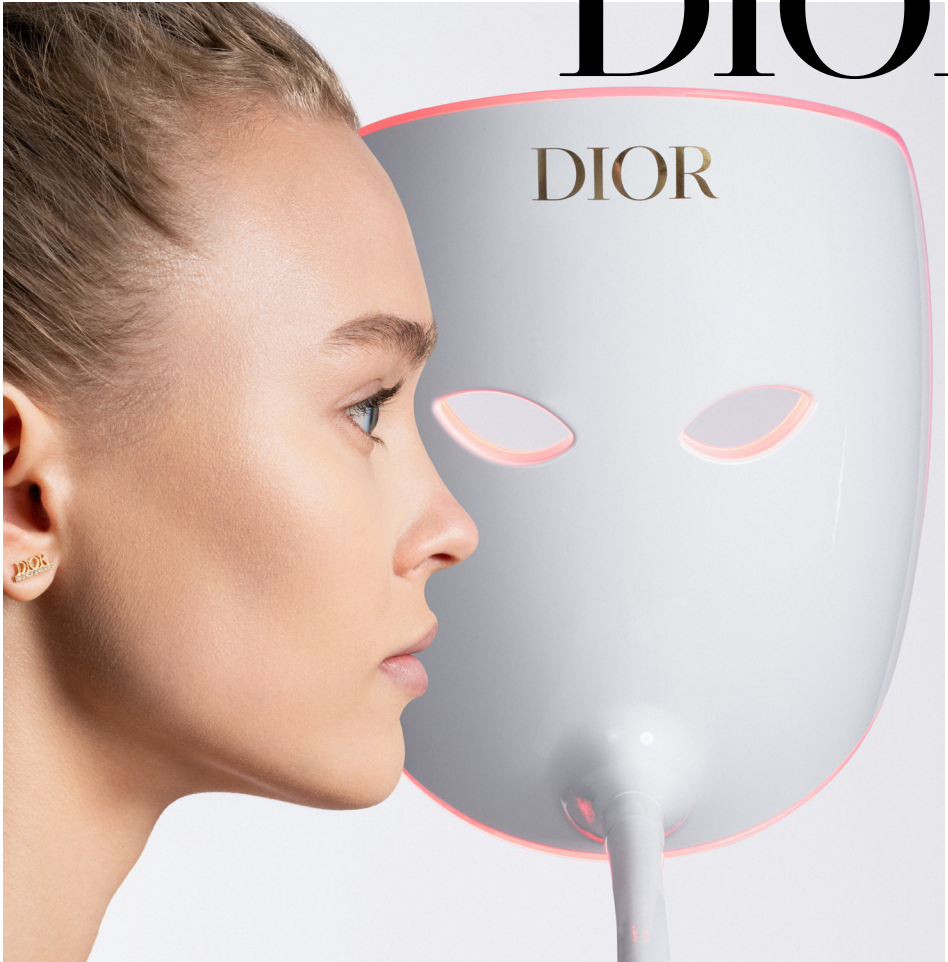


DIOR



DIOR X LUCIBEL

**DIOR REVEALS AN EXCLUSIVE PARTNERSHIP WITH LUCIBEL·LE,
THE LEADING LUXURY BRAND IN PHOTOBIO-MODULATION**

A COSMETIC INNOVATION THAT IMPRESSED VISITORS AT THE LAST VIVATECH SHOW. ONE OF THE MOST POWERFUL LED MASK OF ITS GENERATION. A FUTURISTIC SKINCARE SOLUTION WITH UNPRECEDENTED RESULTS*.

THE HOUSE OF DIOR HAS SIGNED AN EXCLUSIVE PARTNERSHIP WITH FRENCH GROUP LUCIBEL, TO USE AND COMMERCIALIZE THIS FABULOUS TECHNOLOGY.

*At Dior.

DIOR

THIS DESIGN GEM FROM OLIVIER LAPIDUS EVOKING THE OVAL SHAPE OF THE FACE, PROVIDES HIGH PERFORMANCE RESULTS AND AN UNPRECEDENTED BEAUTY EXPERIENCE*.

PREVIEWED AT THE DIOR SPA CHEVAL BLANC PARIS, THE MOST EFFECTIVE LED MASK ON THE MARKET WILL SOON BE PRESENT IN ALL DIOR SPAS AND WILL BE AVAILABLE FOR AN EVEN MORE HOLISTIC CABIN TREATMENT.

A PORTABLE VERSION WILL ALSO BE AVAILABLE IN DIOR BOUTIQUES IN ORDER TO EXTEND THIS LIGHT AND BEAUTY TREATMENT AT HOME.

THE FUTURE OF BEAUTY IS UNDERWAY.

SPECTACULAR RESULTS, CONSTANTLY INCREASING

EXPERTS IN LED TECHNOLOGY AND PIONEERS IN THE NEW APPLICATIONS ENABLED BY LED BEYOND LIGHTING, THE LUCIBEL GROUP OFFERS EXCLUSIVE CUTTING-EDGE TECHNOLOGY. THE POWER AND QUALITY OF THE SELECTED LED COMPONENTS COMBINED WITH THIS EXPERTISE, GIVE THIS LATEST GENERATION MASK, WHICH IS PERFECTLY SAFE FOR BOTH THE EYES AND THE SKIN**, AN UNPARALLELED LEVEL OF PERFORMANCE.

10 TIMES MORE POWERFUL THAN THE VARIOUS EXISTING MODELS, IT HAS A REMARKABLE TREATMENT CAPACITY. ITS WAVELENGTH (635 NANOMETERS) AND ITS POWER (15.6 J/CM²) ARE THE STRONGEST ON THE MARKET, DELIVERING FAST AND CLINICALLY PROVEN RESULTS.

BECAUSE THE BODY IS MADE UP OF LIVING CELLS THAT HAVE A VITAL NEED FOR EXPOSURE TO LIGHT, THE MASK ACTS FIRST OF ALL AS A NATURAL ENERGY SOURCE TO BALANCE THE METABOLISM, RESTORE HARMONY AND SOOTHE THE MIND.

YOUNG SKIN SEES AN INSTANT EFFECT ON QUALITY AND IMPERFECTIONS (REDUCED PORE DIAMETER, REBALANCED SEBUM LEVELS AND A LUMINOUS COMPLEXION).

MORE MATURE SKIN SEES AN ANTI-AGING ACTION THAT IS STRENGTHENED OVER TIME (SMOOTHED WRINKLES, ELASTICITY, VOLUME DENSITY).

THE PHOTOBIOMODULATION PROCESS USES A COOL RED LIGHT (THEREFORE WITHOUT RISK OF BURNING) TO STIMULATE AND REGENERATE THE CELLS. THE LIGHT ENERGY CAUSES A SERIES OF REACTIONS AT THE HEART OF THE CELLS, REGULATING THE SYNTHESSES NEEDED TO BALANCE THE SKIN PROPERLY, FOR A RADIANCE BOOST AS WELL AS AN ANTI-AGING AND PREVENTIVE EFFECT.

THE HIGHLY SPECIFIC POSITIONING OF THE LEDS, IN RELATION TO THE ANATOMY OF THE FACE, ALLOWS EACH AREA TO BENEFIT FROM A SUITABLE LIGHT POWER DENSITY, FOR OPTIMUM RESULTS ON THE ENTIRE FACE.

FROM THE FIRST SESSION AND IN JUST 12 MINUTES, THE EFFECTS ON SKIN QUALITY (SEBUM, REDNESS, ENLARGED PORES) ARE IMMEDIATE. AFTER A MONTH, AT A RATE OF TWO SESSIONS PER WEEK, THE SKIN IS HEALTHIER,

*At Dior.

**Contraindications : Epileptic seizures, pregnancy, facial birth marks, telangiectasia (spider veins), photodermatoses or previous skin reactions to visible light, intake of medications increasing sensitivity to sunlight.

DIOR

SKIN TEXTURE IS SMOOTHED, THE COMPLEXION IS EVEN AND RADIANCE IS INCREASED TENFOLD.

BY THREE MONTHS OF USE AT THE SAME RATE, COLLAGEN AND ELASTIN PRODUCTION IS STIMULATED FOR SMOOTHER, VISIBLY FIRMER SKIN AND REDEFINED CONTOURS.

THREE MONTHS AFTER THE TREATMENT COURSE, THE EXCEPTIONAL RESULTS ARE STILL VISIBLE*!

	DAY 28	DAY 56	DAY 84
SEBUM PERCENTAGE**	-34,9%	-63,9%	-70,3%
PORE DIAMETER***	-28,5%	-30,7%	-32,8%
EVENESS OF COMPLEXION***	NC	-32,7%	-34,9%
FIRMNESS***	-13,6%	-19,7%	-23,6%
DERMAL DENSITY***	+26,4%	+41%	+47,7%
DEPTH OF CROW'S FEET WRINKLES***	-15,6%	-34,7%	-38,3%
FACIAL SAGGING***	-5,4%	-14,7%	-24,8%

A NEW DESIGN, TO BE EXPERIENCED IN ALL DIOR SPAS

THE HOUSE OF DIOR HAS ALWAYS COMBINED MANUAL TECHNIQUES WITH ADVANCED TECHNOLOGIES AND TREATMENTS DERIVED FROM FLORAL SCIENCE, IN ORDER TO TAKE CARE OF THE SKIN AS A WHOLE AND PROVIDE HOLISTIC EXPERIENCES IN ITS CABINS AROUND THE WORLD.

IN ORDER TO BE EVEN MORE EFFECTIVE AND ENJOYABLE, DIOR AND LUCIBEL HAVE CREATED A DESIGN THAT ALLOWS YOU TO EXPERIENCE ALL THE BENEFITS OF OVE, WHILE LYING DOWN COMFORTABLY, FOR A COMBINATION OF SKINCARE AND WELL-BEING.

THIS IS A PROFESSIONAL VERSION ONLY, WHICH ALSO TREATS THE NECK AREA AND WHICH HAS GIVEN RISE TO EXCLUSIVE PROTOCOLS****, AVAILABLE IN ALL DIOR SPAS:

PLAZA ATHÉNÉE, 30 MONTAIGNE AND CHEVAL BLANC PARIS.

IN ADDITION TO OR AS A TREATMENT COURSE

IN ADDITION TO ANY TREATMENT (BODY OR FACE), AND /OR IN THE FORM OF TREATMENT COURSES OF 8, 16 OR 24 SESSIONS.

85 € FOR 20 MINUTES

THE HIGH-TECHNOLOGY RITUAL

AN EXCLUSIVE EXPERIENCE COMBINING THE BEST OF DIOR COSMETIC AND TECHNOLOGICAL KNOW-HOW. THIS PROTOCOL COMBINES THE REGENERATING AND DEEP EXFOLIATING POWER OF DIOR MICRO PEELING WITH THE ANTI-AGING EFFECT OF THE LUCIBEL MASK LED LIGHT. A DEEP TISSUE MASSAGE SEQUENCE RELAXES TENSIONS IN THE FACE AND REACTIVATES RADIANCE, FOR AN IMPRESSIVE NEW SKIN EFFECT.

280 € FOR 60 MINUTES

*GREDECO Report Protocol N°79 6 21. Dermatological Clinical Study on 20 volunteers aged 45 to 70 for 3 months - Pre-programmed 12-minute LED sessions carried out on the face, twice a week at a 72hr interval, for 3 months - 10 volunteers with normal to dry skin and 10 volunteers with combination to oily skin.

**Measured on 10 volunteers with combination to oily skin.

***Measurements taken on 20 volunteers.

****At Dior.

DIOR

HOME LIGHT TECHNOLOGY

BECAUSE WOMEN ALL OVER THE WORLD ARE BECOMING MORE AND MORE EXACTING, AND MANY WANT TO EQUIP THEMSELVES WITH PROFESSIONAL PERFORMANCE TOOLS AT HOME, DIOR IS OFFERING THE ORIGINAL MASK FOR SALE IN ITS BOUTIQUES.

THE SAME STREAMLINED DESIGN ACCESSORY AND THE SAME HOLISTIC ROUTINE, WITH THE SAME EFFECT AND THE SAME PRACTICALITY (NO CHARGING TIME), FOR USE AT ANY TIME, IN THE COMFORT OF YOUR BEDROOM OR BATHROOM, FOR RESULTS THAT KEEP GETTING STRONGER OVER TIME.

AVAILABLE ON DIOR.COM IN JANUARY 2023

@DIORBEAUTY
@DIOR